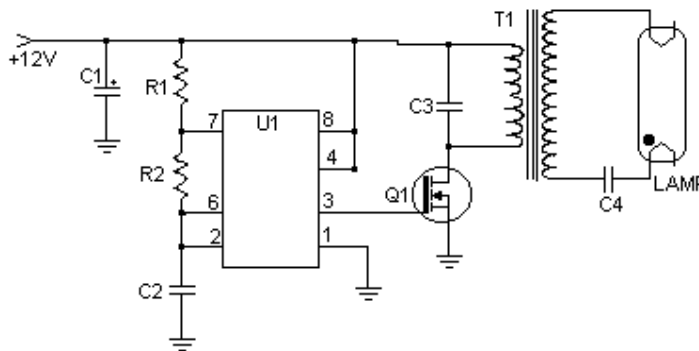


## 12VDC Fluorescent Lamp Driver

A number of people have been unable to find the transformer needed for the [Black Light](#) project, so I looked around to see if I could find a fluorescent lamp driver that does not require any special components. I finally found one in [Electronics Now](#). Here it is. It uses a normal 120 to 6V stepdown transformer in reverse to step 12V to about 350V to drive a lamp without the need to warm the filaments.

### Schematic



### Parts:

| Part  | Total Qty. | Description                       | Substitutions |
|-------|------------|-----------------------------------|---------------|
| C1    | 1          | 100uf 25V Electrolytic Capacitor  |               |
| C2,C3 | 2          | 0.01uf 25V Ceramic Disc Capacitor |               |
| C4    | 1          | 0.01uf 1KV Ceramic Disc Capacitor |               |
| R1    | 1          | 1K 1/4W Resistor                  |               |
| R2    | 1          | 2.7K 1/4W Resistor                |               |
| Q1    | 1          | IRF510 MOSFET                     |               |
| U1    | 1          | TLC555 Timer IC                   |               |
| T1    | 1          | 6V 300mA Transformer              |               |
| LAMP  | 1          | 4W Fluorescent Lamp               |               |
| MISC  | 1          | Board, Wire, Heatsink For Q1      |               |

## Notes:

1. Q1 must be installed on a heat sink.
2. A 240V to 10V transformer will work better then the one in the parts list. The problem is that they are hard to find.
3. This circuit can give a nasty (but not too dangerous) shock. Be careful around the output leads.

本文内容来自互联网，著作权归原作者所有。由电子零件城 (<http://www.epcity.com/>) 整理并制作成 PDF 文件，仅供个人学习之用，不得用于任何商业目的，否则后果自负。如果您认为本 PDF 文件侵犯了您的任何权利，请来信 [epcity@epcity.com](mailto:epcity@epcity.com) 通知，本站立即删除。

搜集整理：电子零件城-笨笨兔 (QQ: 154502842)      2004-04-10